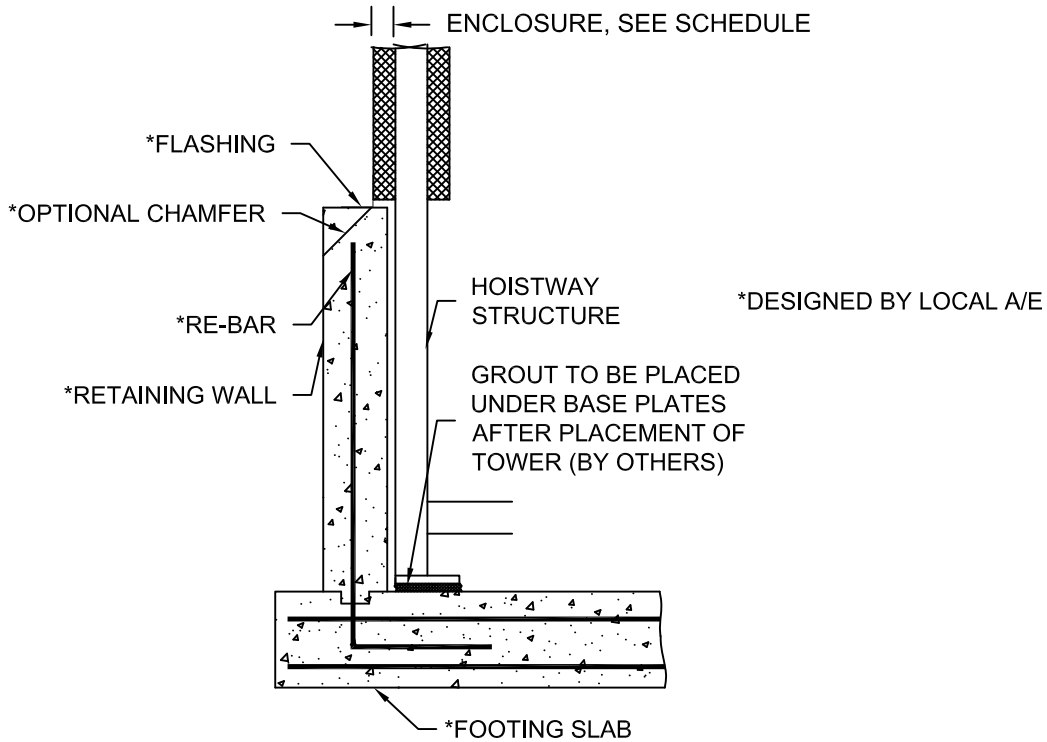


FOOTING/FOUNDATION DETAIL



SECTION A-A

ENCLOSURE OPTIONS

RATING	THICKNESS	DESCRIPTION
1 HR	5/8"	1 LAYER OF 5/8" GYP. EXTERIOR SHEATHING
2 HR	1-1/4"	2 LAYERS OF 5/8" GYP. EXTERIOR SHEATHING

GYP. = GYPSUM

NOTE: 5/8" GYPSUM EXTERIOR SHEATHING IS CLASS X, FIRE RATED

Issue Date: 7/31/20



PHOENIX MODULAR ELEVATOR INC.
 4800 PHOENIX DRIVE, MT. VERNON, ILLINOIS 62864
 PHONE: (618)-244-2314 FAX: (618)-244-1923
 E-mail: Info@phoenixmodularelevator.com
 Web page: www.phoenixmodularelevator.com

FOOTING DETAIL / ENCLOSURE OPTIONS

SIZE A	REV	REV. DATE 2/11/16	FILE NO.
SCALE: N.T.S.	DATE:		DWG NO. FP-4