

## Cab Design

Our standard cabs consist of wood-core walls and are built in our factory. Currently we outsource steel cabs to IDEC. Below is a list of the most common choices we provide. We strive to provide the cab that matches your imagination. If you have a certain design in mind, please let us know.

### Wall Configuration

#### Flush



#### Raised Panels

Removable or Permanent



Horizontal

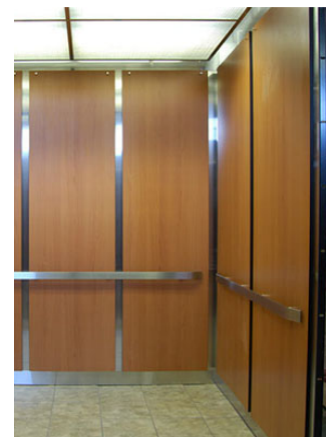


Vertical

#### Reveals



Black



Stainless Steel Brushed #4

## Front Return



Matching Laminate



Stainless Steel Brushed #4

## Wall Finish

Below, are our standard finishes. If you want a non-standard finish, just let us know!

If choosing a steel cab with laminate, please refer to [IDEC's](#) standard laminate choices.

You can view other options for laminate at [Wilsonart](#) and stainless steel options at [RigidizedMetals](#).

### Laminate



Solar Oak



Wild Cherry



Windsor Mahogany



Natural Tigris



Bordeaux Juparana



Hampton Walnut

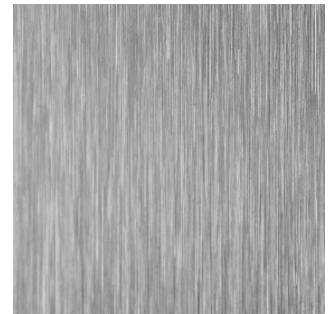


Carbon EV

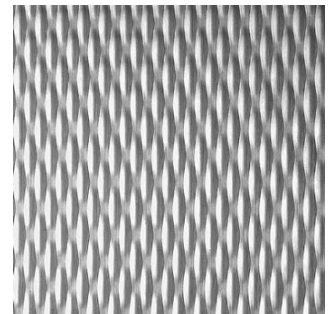


Misted Zephyr

### Stainless Steel

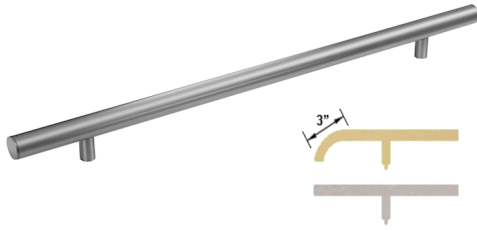


#4 Brushed, Satin

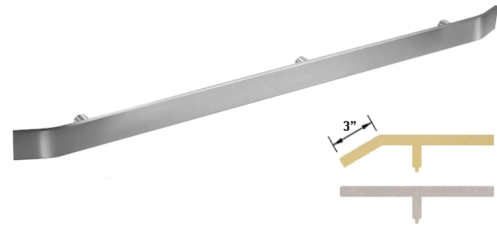


5WL

## Railing



1 1/2" diameter, Stainless Steel Brushed #4



3/8" x 2" flat bar, Stainless Steel Brushed #4

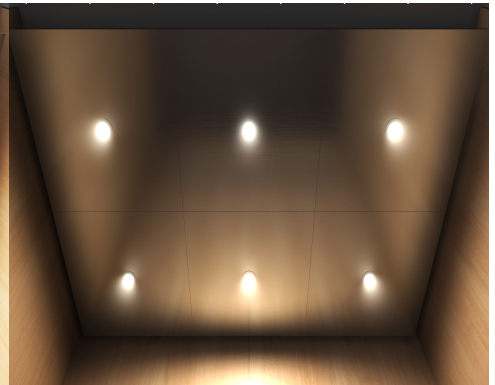
## Ceiling



Drop ceiling with translucent diffuser panels and tube lights

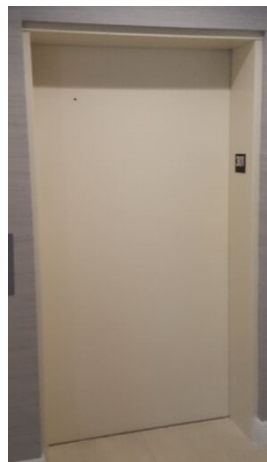


Drop ceiling with brushed aluminium panels and downlights



Drop ceiling with stainless steel panels and downlights

## Doors and Entrances



Prime Painted - White



Stainless Steel Brushed #4